

ALUM. EXTRUDED COVER

CONTINUOUS STEEL CHANNEL

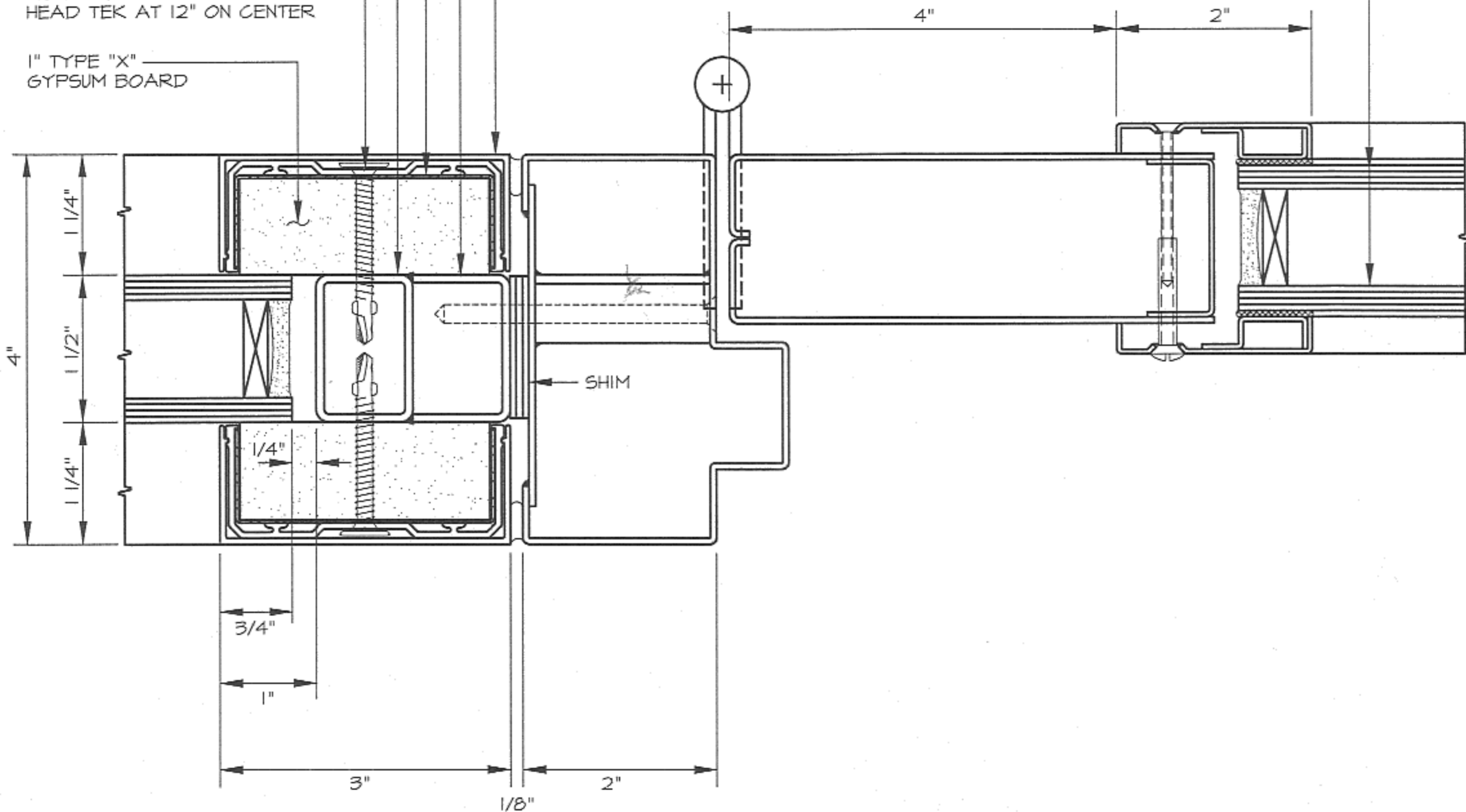
22 GAUGE STEEL RETAINER
WITH SLOTTED HOLE AT 12" O.C.
(FOR EXPANSION)

1" X 1 1/2" X 14 GA. T.S.

#10 X 1 1/2" PHILLIPS WAFFER
HEAD TEK AT 12" ON CENTER

1" TYPE "X"
GYPSUM BOARD

-SLII-XL-90
FIRE RATED 90 MINUTE
SUPERLITE II-XL TRANSPARENT
VISION PANEL



* GPX INTERIOR WALL SYSTEM *

A1

- 90/120 MINUTE RATED SUPERLITE-II-XL -
- GPX SIDELITE AND HOLLOW METAL FRAME -

- PATENT #4601143 -