

-SLII-XL-90  
FIRE RATED 90 MINUTE  
SUPERLITE II-XL TRANSPARENT  
VISION PANEL

ALUM. EXTRUDED COVER

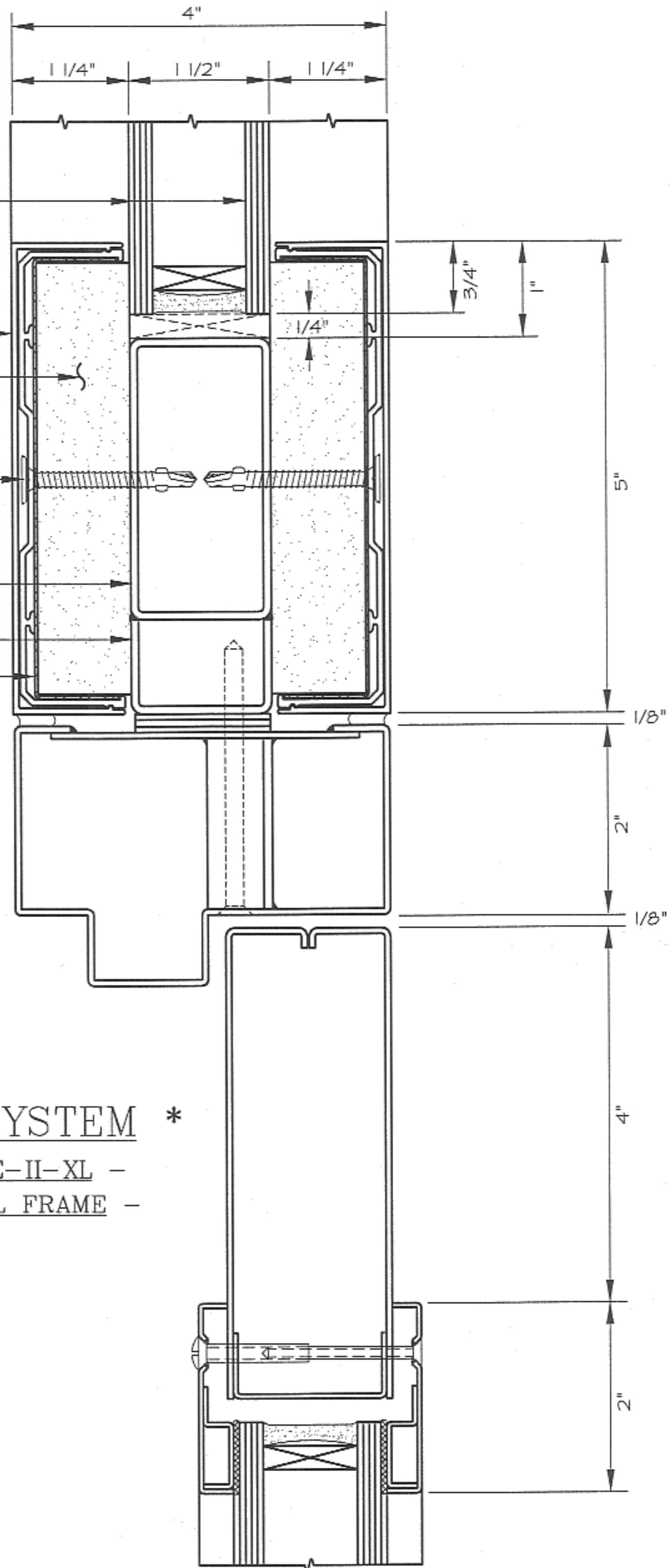
1" TYPE "X"  
GYPSUM BOARD

#10 X 1 1/2" PHILLIPS WAFFER  
HEAD TEK AT 12" ON CENTER

3" X 1 1/2" X 14 GA. T.S.

CONTINUOUS STEEL CHANNEL

22 GAUGE STEEL RETAINER  
WITH SLOTTED HOLE AT 12" O.C.  
(FOR EXPANSION)



\* GPX INTERIOR WALL SYSTEM \*

A4

- 90/120 MINUTE RATED SUPERLITE-II-XL -
- GPX TRANSOM AND HOLLOW METAL FRAME -
- PATENT #4601143 -